



MMTA Course Five – Review of Geocosmics and Cycles Plus Price Objective Calculations



IMPORTANCE OF SOLAR/LUNAR COMBINATIONS FOR SHORT-TERM TRADING PLANS

Module Lesson Four



Disclaimer and Appropriate Use of Course Information: The content and instruction made throughout this course are provided solely for reference and educational purposes to students, traders, and analysts (Participants).

By participating in this course, you agree that all trading or investment decisions made by Participant are at the sole risk to the Participant and Participant assumes all responsibility for any and all decisions made in financial markets.

By taking this course, you also acknowledge that trading in financial markets involves risk of loss as well as the potential for gains. As a student, trader, or investor, you agree to assume all responsibility for any and all actions you initiate in financial markets, and neither the authors, instructors, or publishers affiliated with this course, or anyone whose work is cited or referenced in the course, assumes any liability whatsoever for your decisions.

Futures or options trading are considered high risk. Information provided in the MMTA course or MMA publications is provided with sincere intent, and according to MMA's own proprietary and copyrighted processes and methodologies. All content and information provided is the intellectual property of MMA and MMTA developed by Raymond Merriman and his 40+ years of experience, observation, and research. Students may use this material responsibly and solely for their own trading and investment planning. They may cite brief sections of these studies with proper credit to MMA or MMTA. However, any other reproduction or use of this copyrighted material must be with the written consent of MMA.

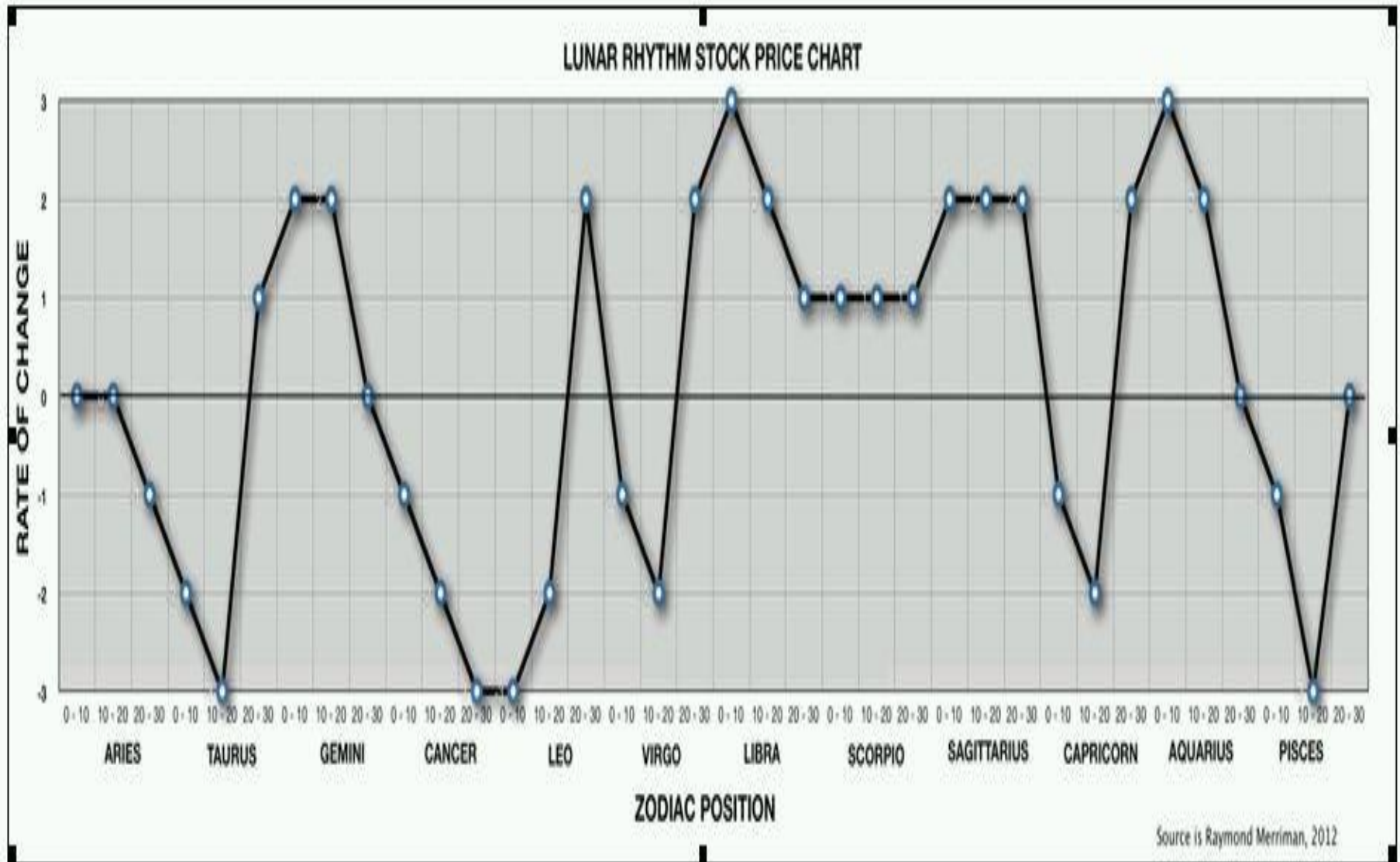
TRADING PLAN STEPS CONTINUED

- Steps 6 is to identify approaching Solar-Lunar influences (7 comes later in lesson)
- Use both the observational graph and quantitative studies (from FAR)
- Can create similar studies for other markets too

OBSERVATIONAL: THE GENERAL FLOW OF THE MOON THROUGH THE SIGNS AND THEIR CORRESPONDENCE TO PRICE ACTIVITY IN THE U.S. STOCK MARKET AND PRECIOUS METALS (QUALITATIVE ANALYSIS)

- U.S. Stocks
- Review Observational Chart
- Helps establish a basic framework
- Keep in mind that planetary aspects are more dominant than lunar signs

LUNAR RHYTHM FOR STOCKS

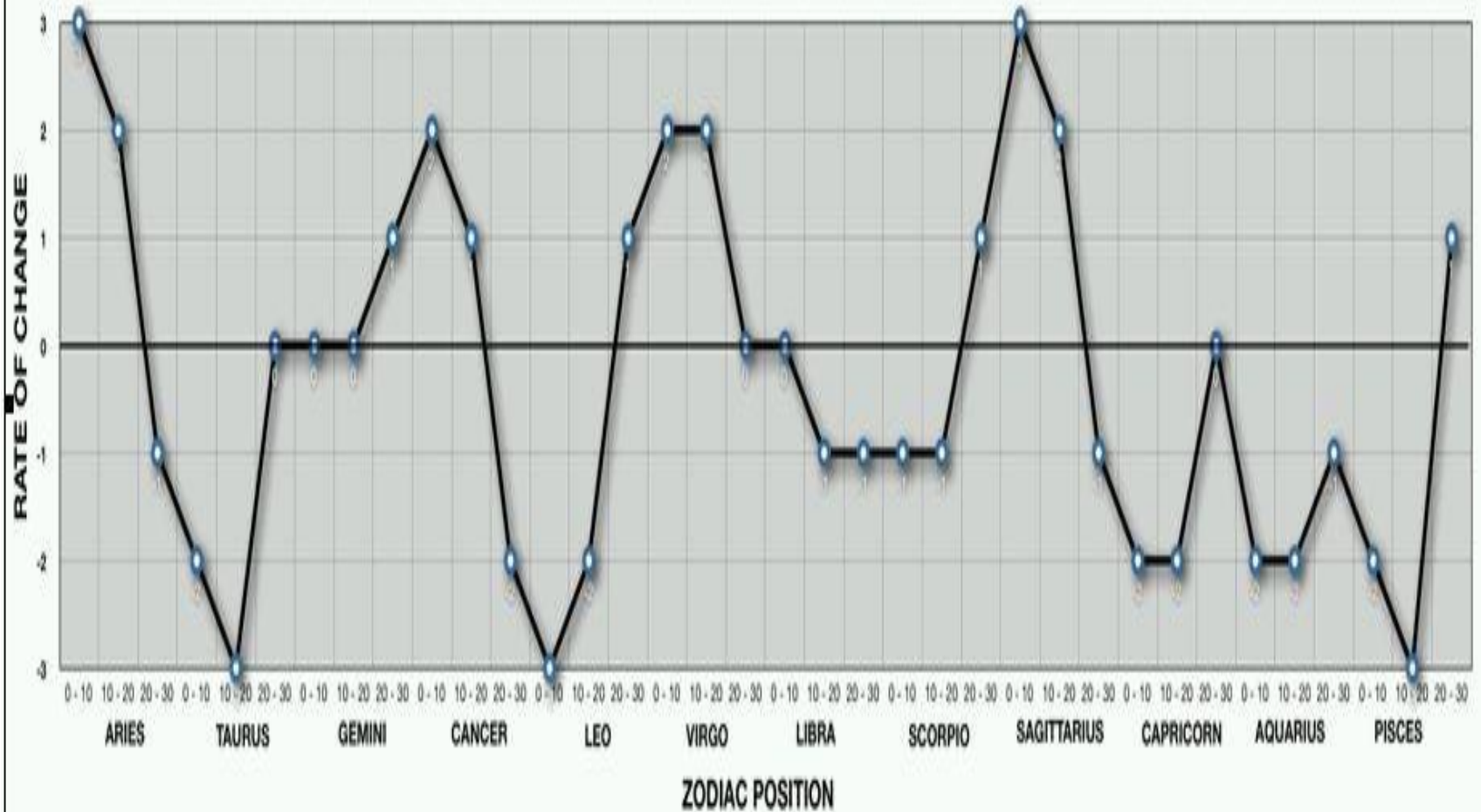


OBSERVATIONAL: THE GENERAL FLOW OF THE MOON THROUGH THE SIGNS AND THEIR CORRESPONDENCE TO PRICE ACTIVITY IN THE U.S. STOCK MARKET AND PRECIOUS METALS (QUALITATIVE ANALYSIS)

- Gold (Precious metals)
- Review Observational Chart
- Helps establish a basic framework
- Keep in mind that planetary aspects are more dominant than lunar signs

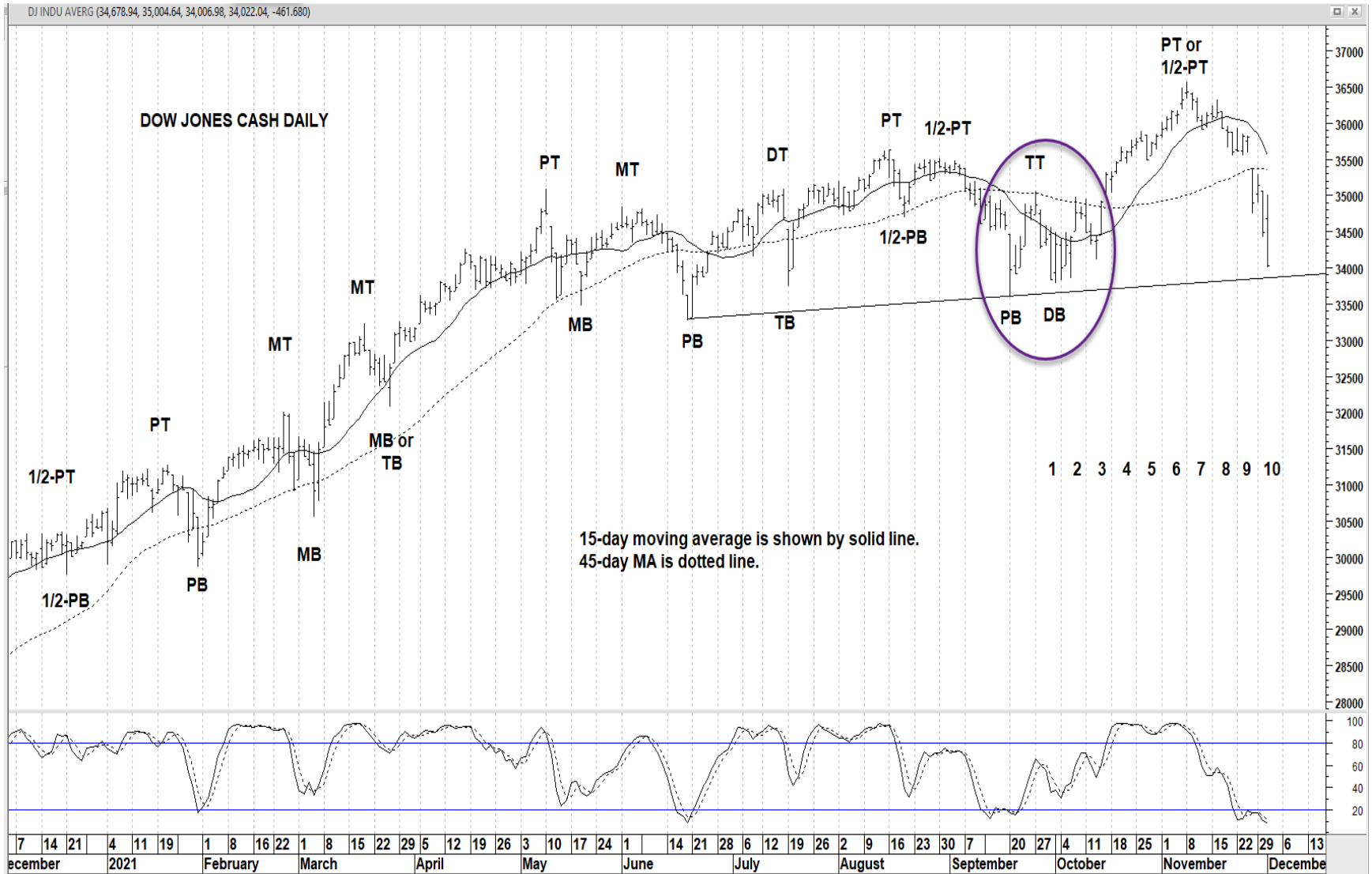
LUNAR RHYTHM FOR METALS

LUNAR RHYTHM GOLD PRICE CHART



Source is Raymond Merriman, 2012

Example of natural lunar rhythm applied to DJIA September 20-October 13, 2021.



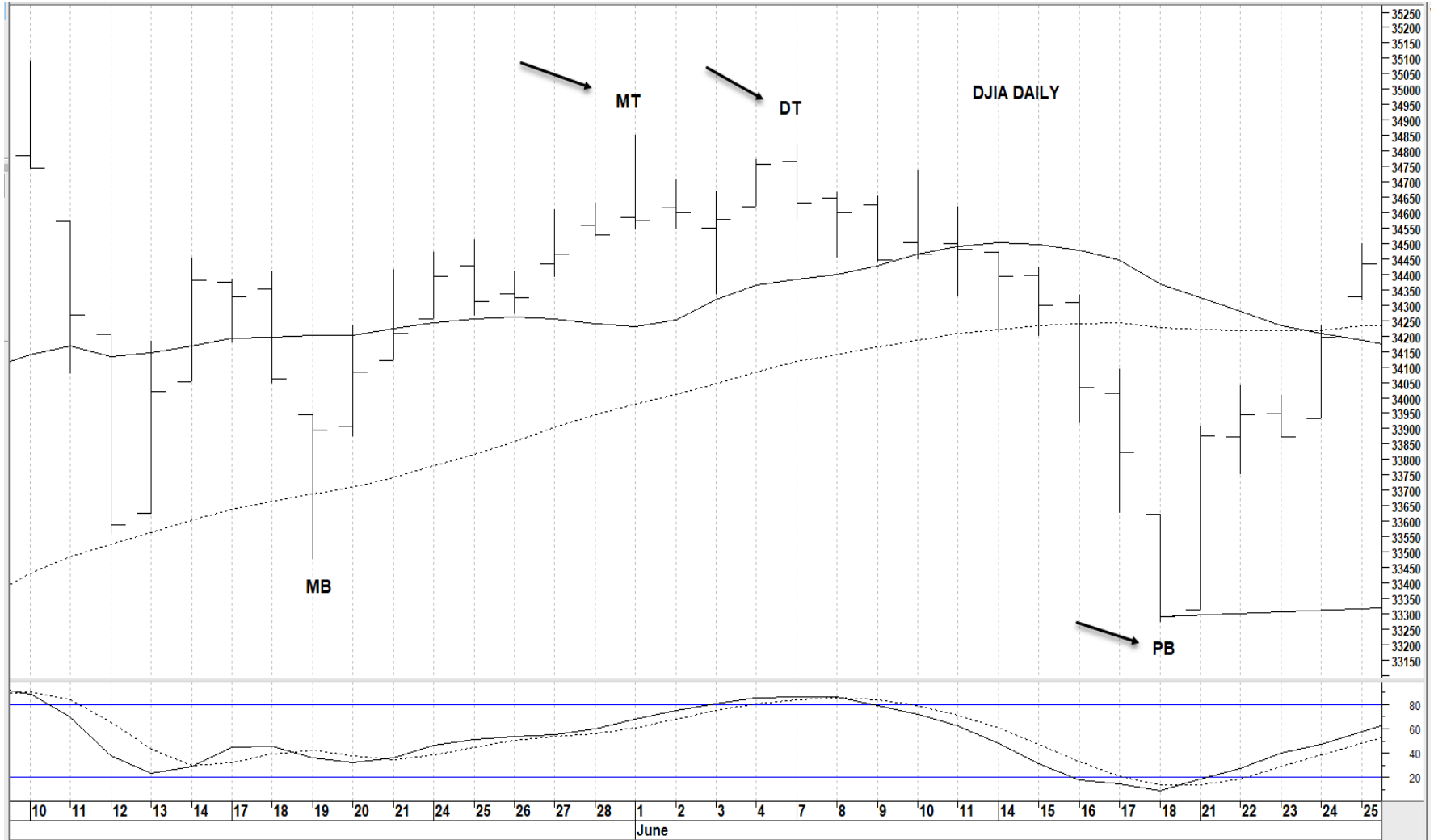
MARKET REVERSALS IN U.S. STOCKS AND PRECIOUS METALS BASED ON SOLAR-LUNAR CORRESPONDENCES (QUANTITATIVE STUDIES)

- Steps 7 is to review quantitative solar-lunar studies
- Review Volume 4 of the Stock Market Timing series, “The Sun, Moon and Silver” book, and “Solar/Lunar Keys to Gold Prices.”
- Ideal to coordinate with observational studies
 - Stronger signals
- Example: DJIA- Gemini Season 2021

TRADING PLAN STEPS CONTINUED

Moon with the Sun in Gemini	Weighted Values for Reversals	Big Range Days	Lows	Highs	Mercury	Venus
Moon in Aries	48.8##		1	2		75.4#
Moon in Taurus	115.1		3	5	77.9#	67.1#
Moon in Gemini	97.8		3	3	103.5	71.4#
Moon in Cancer	87.0		4	2	115.5	141.3*
Moon in Leo	127.9*		4	4		153.1**
Moon in Virgo	100.7		2	5		
Moon in Libra	119.5		7	1		
Moon in Scorpio	76.1#		3	2		
Moon in Sagittarius	108.6		0	7		
Moon in Capricorn	108.6		4	2		
Moon in Aquarius	89.5		3	2		
Moon in Pisces	117.2		4	4		

TRADING PLAN STEPS CONTINUED



CHECKING THE DAILY, HOURLY, HALF-HOUR, AND SOMETIMES EVEN THE 5-MINUTE TECHNICAL PICTURE BEFORE EACH DAY

- Step 8 is to set up a daily plan
- Review technical picture of markets on periodic basis
- Focus on technical indicators
 - 15-bar slow stochastic
 - 18-bar CCI
 - 14-period RSI
 - MAs ($1/2$ or $1/3$ of cycle lengths)
 - Chart patterns
- Note bullish or bearish patterns
- Study intraday charts

CHECKING INTRADAY CHARTS

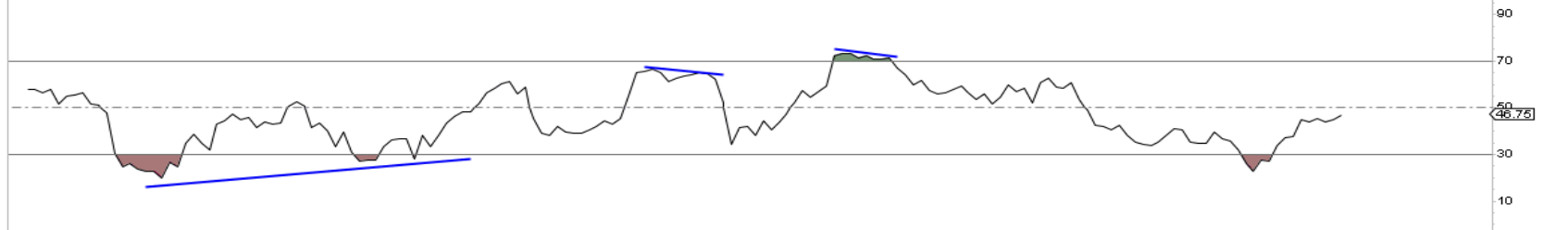
\$INDU Dow Jones Industrial Average INDEX

13-Oct-2021

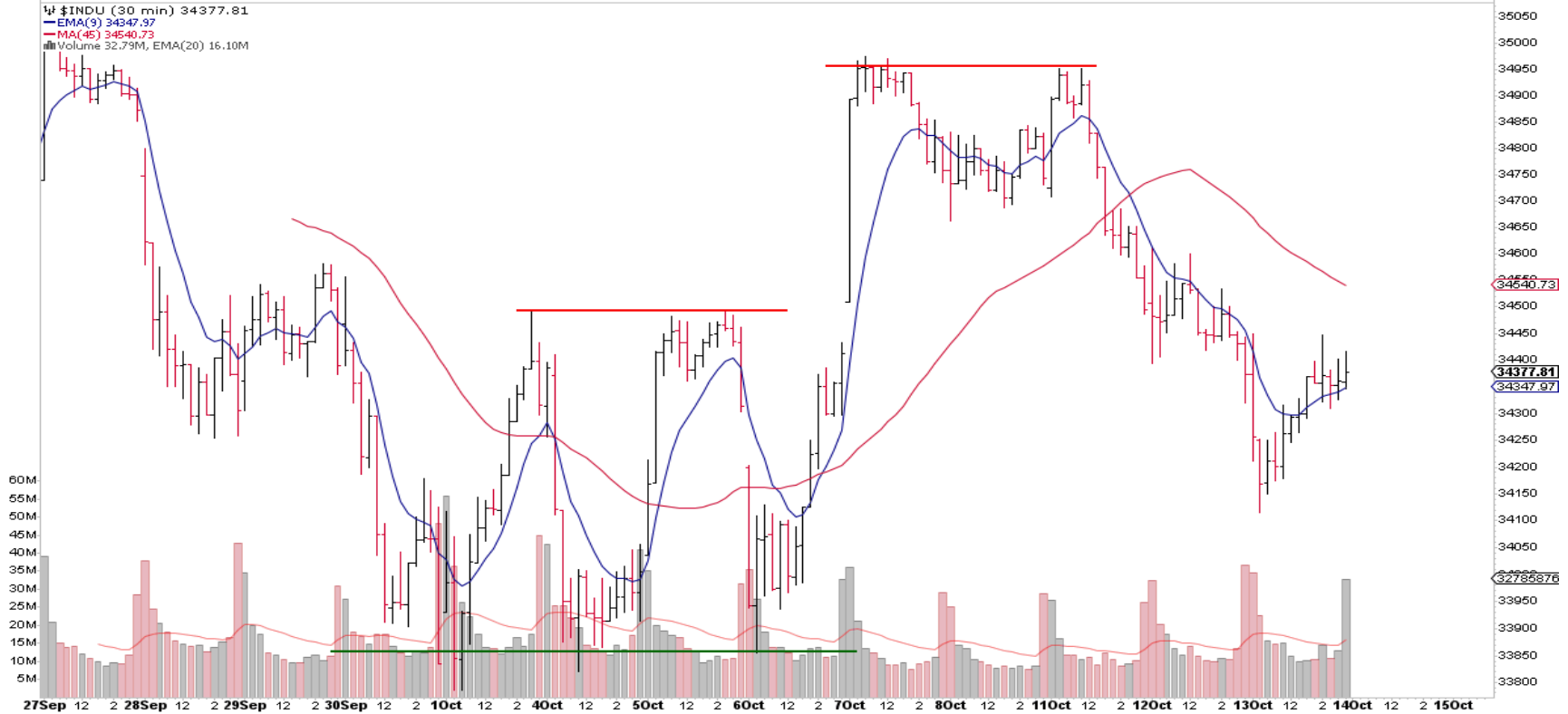
Open 34372.71 High 34449.83 Low 34115.10 Close 34377.81 Volume 319.8M Chg -0.53 (-0.00%)

© StockCharts.com

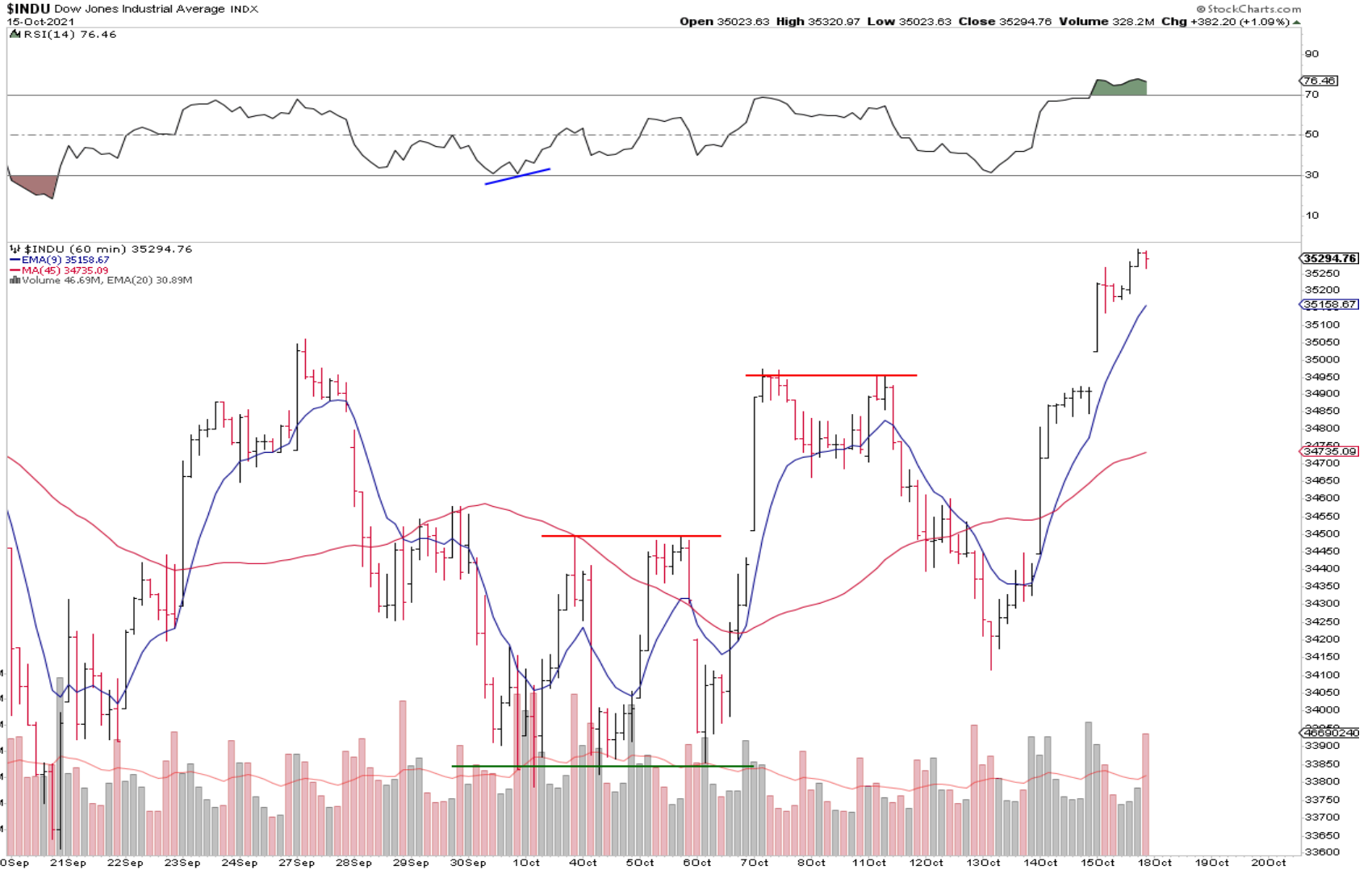
▲ RSI(14) 46.75



\$INDU (30 min) 34377.81
— EMA(9) 34347.97
— MA(45) 34540.73
■ Volume 32.79M, EMA(20) 16.10M



CHECKING INTRADAY CHARTS



REVIEW

- 1. Identify last primary cycle trough
- 2. Identify current cycle week number
- 3. Identify market phase
- 4. Determine primary cycle pattern
- 5. Determine CRDs, geocosmic signature levels, nature of planetary aspects
- 6. Note general flow of Moon (see rhythm charts)
- 7. Note solar-lunar weighted values
- 8. Check intraday charts

QUIZ #4

Using the eight steps given in this lesson, draw up a weekly trading plan for the DJIA, Gold and Silver. Then draw up a trading plan for Monday.

End of Lesson 4

Break