

MMAView Installation

It is very simple to “install” MMAViewer. All you need to do is to download the 3 binary files and an user’s guide (this file) into a local directory:

1. MMAView.EXE
2. MSFL91.DLL
3. MSFL91D.DLL
4. MMAViewGuide.pdf

MMAView is the executable file. You can double click it to launch this program. Here is a screenshot of the program:

Date	Open	High	Low	Close	Pivot	TIP	Support	Resistance	Bullish xOver Zone	Bearish xOver Zone
2014/5/23	2020.11	2034.57	2017.74	2034.57	2028.96	2023.36	2026.15 - 2023.35	2042.98 - 2040.18		
2014/5/22	2023.15	2041.96	2018.88	2021.29	2027.37	2016.93	2009.74 - 2012.79	2032.83 - 2035.87		
2014/5/21	2001.31	2025.19	1991.06	2024.95	2013.73	2010.52	2007.88 - 2002.27	2042.02 - 2036.41		
2014/5/20	2011.85	2018.16	2002.76	2008.12	2009.68	2013.38	2000.42 - 2001.20	2015.82 - 2016.60		
2014/5/19	2023.01	2023.27	1996.01	2005.18	2008.16	2020.73	1991.56 - 1993.04	2018.81 - 2020.30		
2014/5/16	2023.60	2027.76	2012.69	2026.50	2022.32	2034.37	2018.97 - 2016.88	2034.03 - 2031.94		
2014/5/15	2044.38	2047.32	2022.86	2024.97	2031.72	2044.19	2012.75 - 2016.12	2037.20 - 2040.57		2037.20 - 2041.58
2014/5/14	2049.27	2056.57	2042.74	2047.91	2049.08	2047.51	2040.99 - 2041.58	2054.82 - 2055.41		
2014/5/13	2055.08	2061.06	2043.55	2050.73	2051.78	2034.80	2041.97 - 2042.50	2059.48 - 2060.01		
2014/5/12	2022.93	2055.51	2016.64	2052.87	2041.67	2023.98	2033.44 - 2027.84	2072.30 - 2066.71		
2014/5/9	2016.50	2020.45	2001.30	2011.13	2010.96	2014.88	2001.56 - 2001.47	2020.71 - 2020.63		
2014/5/8	2006.85	2036.94	2005.69	2015.27	2019.30	2021.03	1999.65 - 2001.66	2030.90 - 2032.92		
2014/5/7	2023.15	2024.63	2008.45	2010.08	2014.39	2021.67	2001.99 - 2004.15	2018.17 - 2020.33		
2014/5/6	2024.26	2038.70	2021.49	2028.04	2029.41	2024.93	2019.43 - 2020.11	2036.65 - 2037.33		
2014/5/5	2022.18	2028.96	2007.35	2027.35	2021.22	2019.53	2016.55 - 2013.48	2038.16 - 2035.09		
2014/4/30	2020.44	2029.54	2016.58	2026.36	2024.16	2016.86	2019.88 - 2018.78	2032.84 - 2031.74		
2014/4/29	2001.90	2021.68	1997.64	2020.34	2013.22	2024.11	2008.32 - 2004.76	2032.36 - 2028.80		
2014/4/28	2033.34	2035.99	2000.14	2003.49	2013.20	2040.70	1985.56 - 1990.42	2021.41 - 2026.27		
2014/4/25	2060.54	2065.64	2035.57	2036.52	2045.91	2058.84	2021.48 - 2026.18	2051.56 - 2056.25		
2014/4/24	2064.16	2075.76	2056.19	2057.03	2062.99	2065.07	2047.25 - 2050.23	2066.82 - 2069.80		
2014/4/23	2068.08	2076.35	2059.11	2067.38	2067.61	2070.09	2058.76 - 2058.88	2076.00 - 2076.12		
2014/4/22	2062.79	2073.66	2047.33	2072.83	2064.61	2078.50	2059.67 - 2055.55	2086.00 - 2081.89		
2014/4/21	2085.98	2103.08	2065.23	2065.83	2078.05	2090.89	2046.90 - 2053.01	2084.75 - 2090.86		2084.75 - 2088.52
2014/4/18	2091.48	2099.64	2081.19	2097.75	2092.86	2099.25	2088.52 - 2086.08	2106.97 - 2104.53		
2014/4/17	2108.95	2110.72	2095.71	2098.88	2101.77	2104.48	2091.38 - 2092.83	2106.39 - 2107.83		
2014/4/16	2097.21	2112.05	2092.16	2105.12	2103.11	2113.06	2095.17 - 2094.17	2115.07 - 2114.06		
2014/4/15	2125.90	2125.90	2098.15	2101.60	2108.55	2121.96	2087.72 - 2091.20	2115.48 - 2118.95		2115.48 - 2122.63
2014/4/14	2127.41	2134.43	2116.61	2131.54	2127.53	2127.89	2122.63 - 2120.62	2140.45 - 2138.45		
2014/4/11	2130.37	2138.65	2120.18	2130.54	2129.79	2119.78	2121.31 - 2120.93	2139.78 - 2139.40		
2014/4/10	2105.88	2146.67	2098.08	2134.30	2126.35	2104.70	2110.00 - 2106.03	2158.60 - 2154.62		
2014/4/9	2100.65	2108.75	2095.64	2105.24	2103.21	2079.71	2098.68 - 2097.67	2111.79 - 2110.78		
2014/4/8	2054.53	2102.45	2052.90	2098.28	2084.55	2061.66	2073.51 - 2066.64	2123.06 - 2116.19		

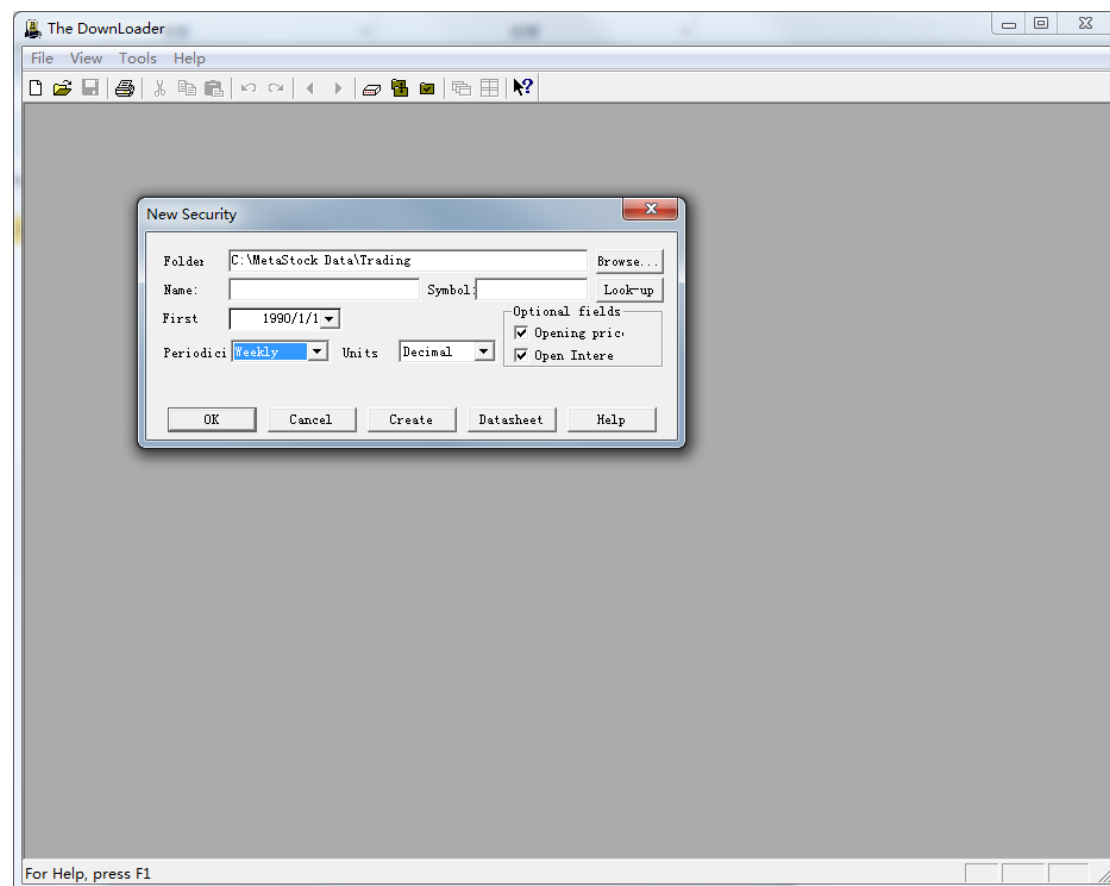
MMAView User's Guide

1 Creating Symbols and Download Data via MetaStock Downloader

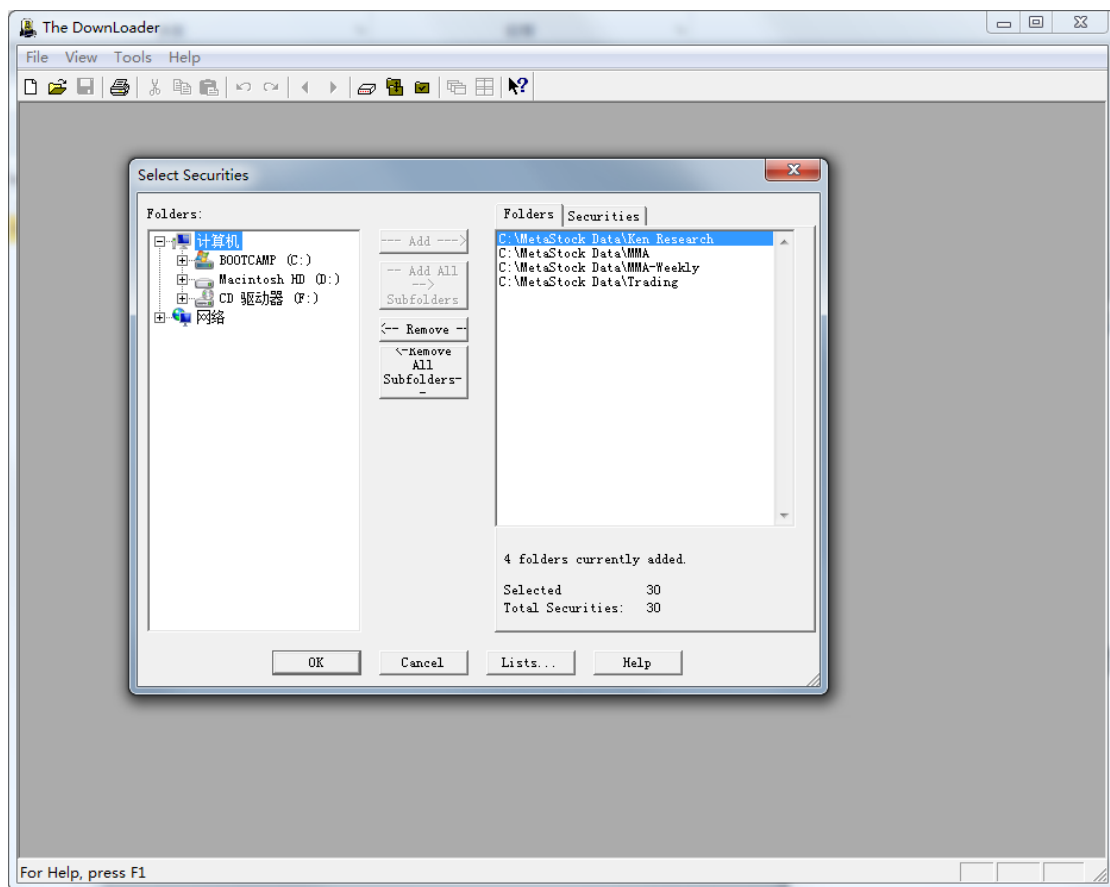
MMAView requires data to be available locally from MetaStock. Downloader is an application provided by MetaStock and it can be used to download daily and weekly data needed for MMAView.

To do so, you should do the following:

- Launch downloader
- Select File->New->Security menu item
- In the popup box, fill in the proper information.
- **Very Important:** Please noted that daily and weekly data are downloaded separately. If you plan to use MMAView on both daily and weekly timeframe, you will need to have both daily and weekly data downloaded. MMAView will not generate weekly data from daily data.



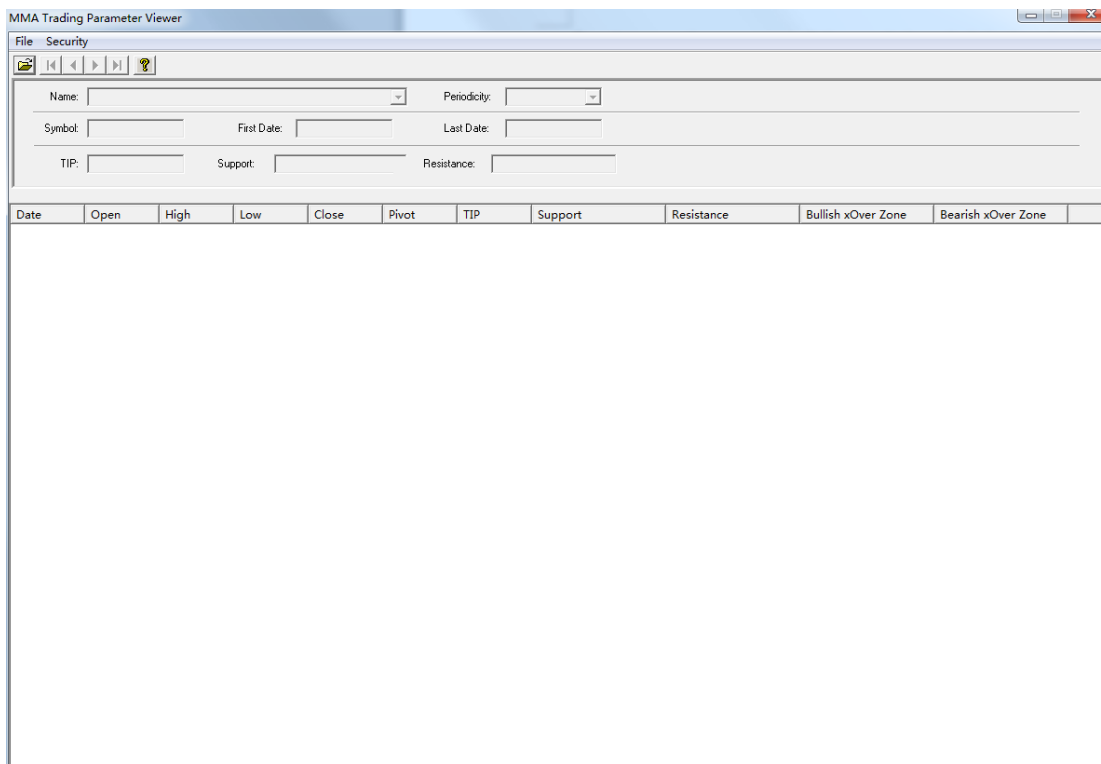
- Once you have created all the needed symbols in downloader, go to Tools->Download Prices menu item to perform the download.



2 Using the MMAView

To use MMAView, please do the following:

- Launch the MMAView program by double clicking it.
- The initial MMAView window shows up:



- Select File->Open menu item, a file dialog box shows up.
- Select the directory where you have the data from MetaStock downloader.
- Hit OK on the dialog box.
- MMAView will automatically populated with the first symbol from the MetaStock database

Date	Open	High	Low	Close	Pivot	TIP	Support	Resistance	Bullish xOver Zone	Bearish xOver Zone
2014/5/23	23.42	23.50	23.30	23.31	23.37	23.41	23.21 - 23.24	23.41 - 23.44		
2014/5/22	23.63	23.64	23.39	23.39	23.47	23.42	23.26 - 23.31	23.51 - 23.56		
2014/5/21	23.28	23.49	23.22	23.45	23.39	23.41	23.32 - 23.28	23.59 - 23.55		
2014/5/20	23.28	23.52	23.26	23.39	23.39	23.43	23.26 - 23.26	23.52 - 23.52		
2014/5/19	23.62	23.65	23.27	23.41	23.44	23.52	23.22 - 23.24	23.60 - 23.62		
2014/5/16	23.48	23.58	23.33	23.42	23.44	23.72	23.30 - 23.31	23.55 - 23.56		
2014/5/15	23.81	23.93	23.51	23.62	23.69	23.86	23.41 - 23.44	23.83 - 23.87	23.83 - 23.94	
2014/5/14	24.04	24.13	23.96	24.01	24.03	23.95	23.92 - 23.94	24.10 - 24.11		
2014/5/13	23.93	24.10	23.74	23.75	23.86	23.85	23.57 - 23.63	23.93 - 23.99		
2014/5/12	24.01	24.12	23.85	23.93	23.97	23.84	23.80 - 23.81	24.06 - 24.08		
2014/5/9	23.85	23.95	23.52	23.73	23.73	23.81	23.51 - 23.52	23.94 - 23.95		
2014/5/8	23.82	23.99	23.72	23.77	23.83	24.01	23.64 - 23.66	23.91 - 23.93		
2014/5/7	24.20	24.21	23.62	23.81	23.88	24.22	23.51 - 23.55	24.10 - 24.14	24.10 - 24.21	
2014/5/6	24.43	24.44	24.25	24.28	24.32	24.32	24.19 - 24.21	24.38 - 24.40		
2014/5/5	24.60	24.67	24.29	24.41	24.46	24.16	24.22 - 24.24	24.60 - 24.62		
2014/5/2	23.92	24.39	23.81	24.32	24.17	24.05	24.03 - 23.96	24.61 - 24.54		
2014/5/1	23.85	24.01	23.73	23.79	23.84	24.07	23.65 - 23.68	23.93 - 23.96		
2014/4/30	24.05	24.34	23.92	24.11	24.12	24.14	23.90 - 23.91	24.32 - 24.33		
2014/4/29	23.93	24.45	23.92	24.31	24.23	24.21	24.04 - 24.00	24.58 - 24.53		
2014/4/28	24.31	24.34	23.88	23.99	24.07	24.15	23.76 - 23.80	24.22 - 24.26		
2014/4/25	24.13	24.48	24.03	24.46	24.32	24.18	24.24 - 24.17	24.68 - 24.62		
2014/4/24	23.95	24.36	23.84	23.93	24.05	23.95	23.67 - 23.73	24.19 - 24.25		
2014/4/23	23.83	24.47	23.77	24.27	24.17	23.75	23.92 - 23.87	24.62 - 24.57		
2014/4/22	23.54	23.82	23.33	23.79	23.65	23.59	23.55 - 23.47	24.03 - 23.96		
2014/4/21	23.58	23.74	23.04	23.51	23.43	23.66	23.16 - 23.12	23.86 - 23.82		
2014/4/17	23.80	23.96	23.54	23.57	23.69	23.80	23.36 - 23.42	23.78 - 23.84		
2014/4/16	24.03	24.08	23.67	23.80	23.85	24.10	23.59 - 23.62	24.01 - 24.03		
2014/4/15	23.83	24.07	23.53	24.02	23.87	24.28	23.75 - 23.68	24.29 - 24.22		
2014/4/14	24.57	24.83	24.38	24.52	24.58	24.59	24.30 - 24.32	24.75 - 24.77		
2014/4/11	24.64	24.80	24.13	24.22	24.38	24.72	23.88 - 23.97	24.56 - 24.64		
2014/4/10	25.24	25.30	24.53	24.57	24.80	24.85	24.19 - 24.30	24.95 - 25.07		
2014/4/9	24.60	25.34	24.50	25.07	24.97	24.68	24.65 - 24.60	25.49 - 25.44		

- You can click on the Name dropdown list to select the symbol you want to do the calculation. Once the symbol is selected, MMAView will load the data of the symbol into view as shown on the above screenshot. The periodicity will show if this is a daily data or weekly data.
- All other fields are self-explanatory.
- For questions, feel free to email me at kzlia@gmail.com or contact me on skype: kzlia