

MMA BITCOIN OUTLOOK

By: Gianni Di Poce, MMTA Director & Analyst

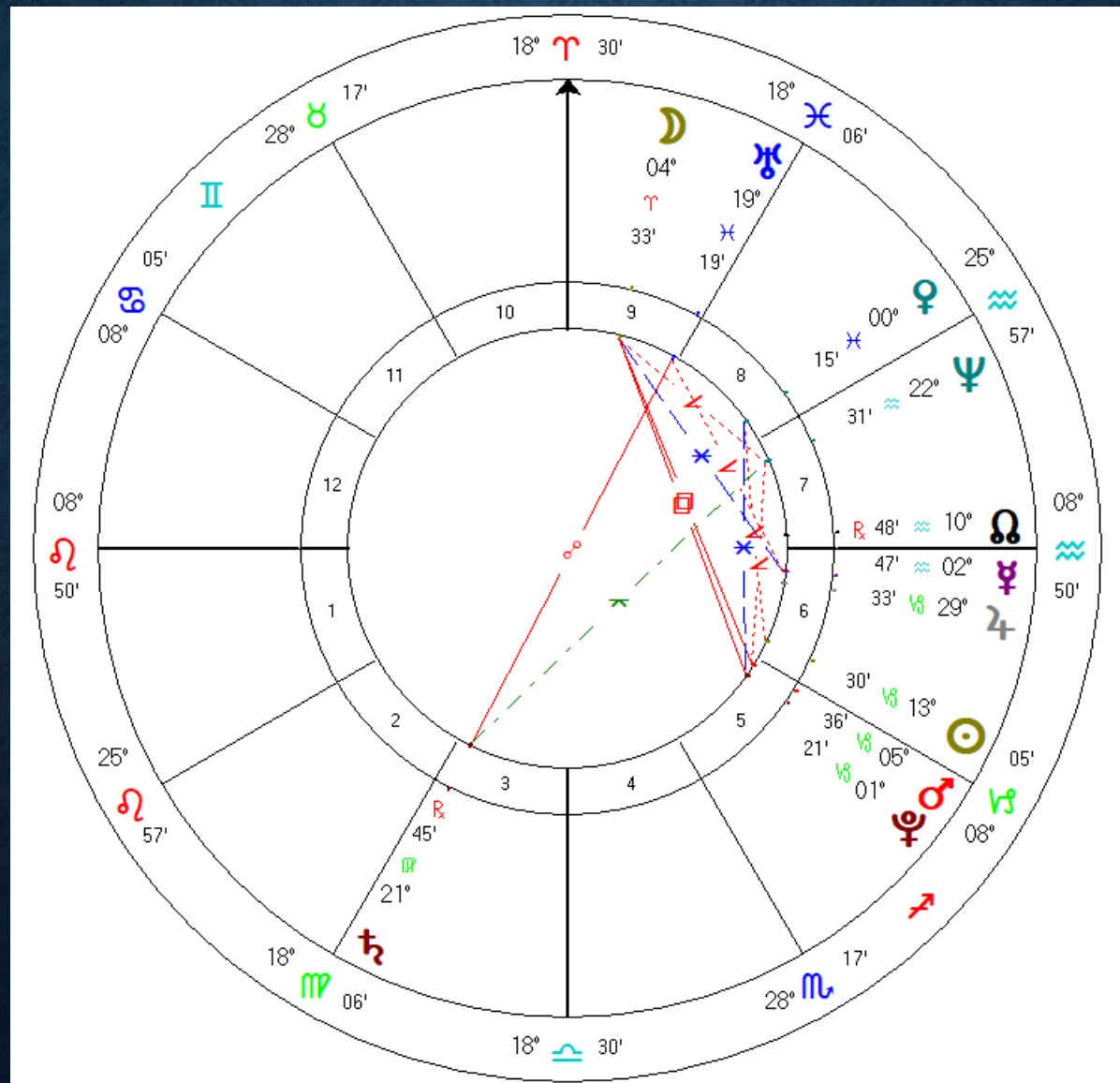
BITCOIN LONG-TERM

- Long-term cycle data limited to 2009 inception
- 4-year cycle
 - Last low December 2018
 - September 45th month

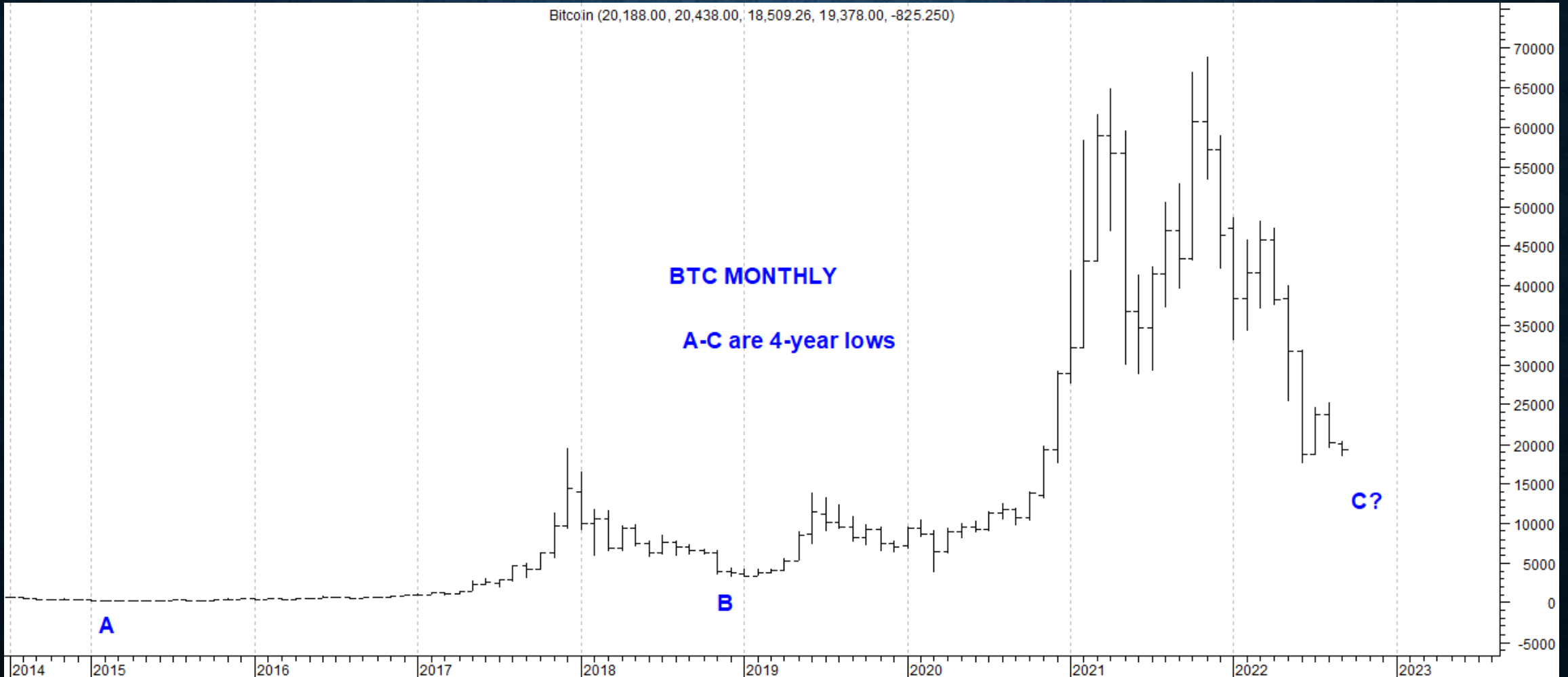
GEOCOSMICS TO CONSIDER

- ♃ through ☿ : Boom-Bust Cycle
- ♃ square ♃ - March 2020, 3x in 2021, October 2022
- ♀ ingress into ♃: March 2023
- ♃ ingress into ☿ : May 2023

BITCOIN (PLACIDUS)



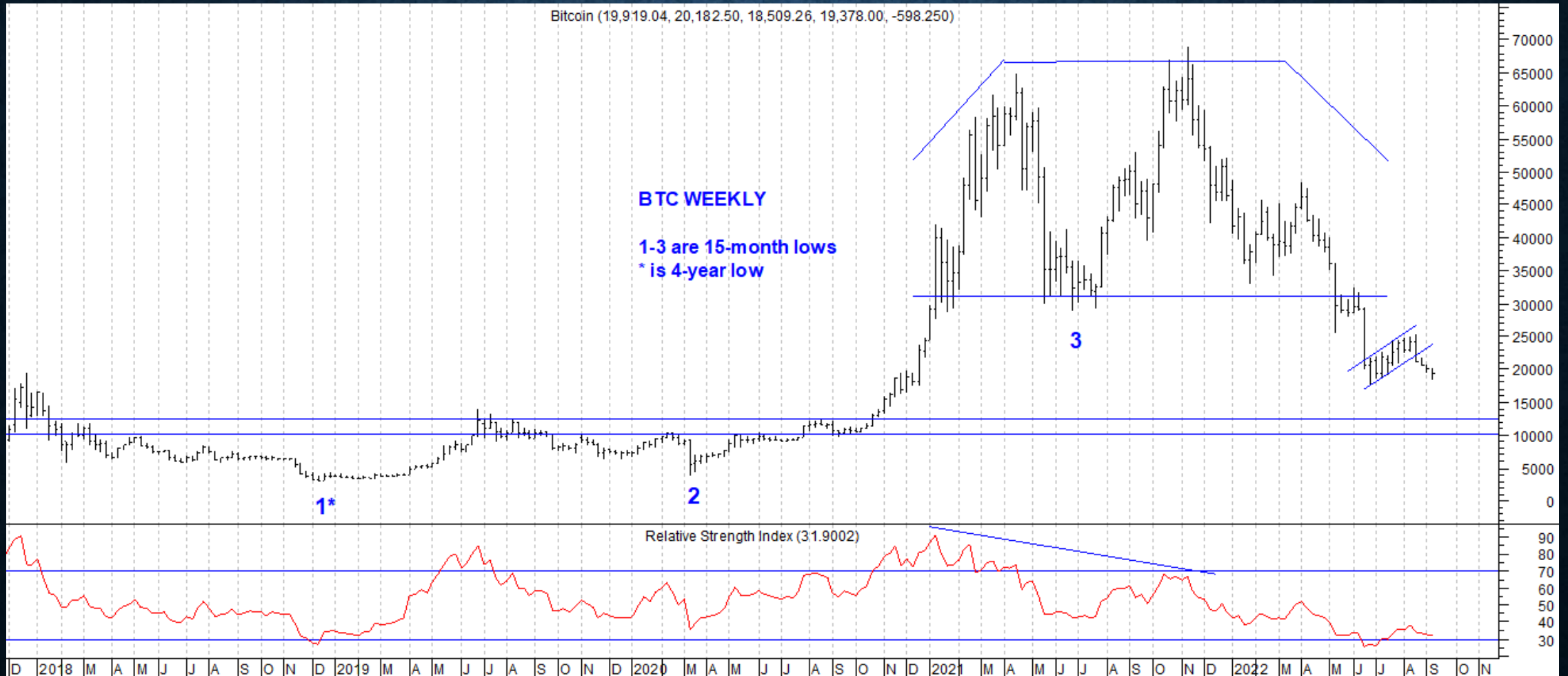
BITCOIN MONTHLY



BITCOIN INTERMEDIATE-TERM

- 4-year cycle comprised of three 15-month cycles
- 15-month lows occurred March 2020 and June 2021
- September is 15th month from June 2021
- 3-month orb
- Low due by December according to this count

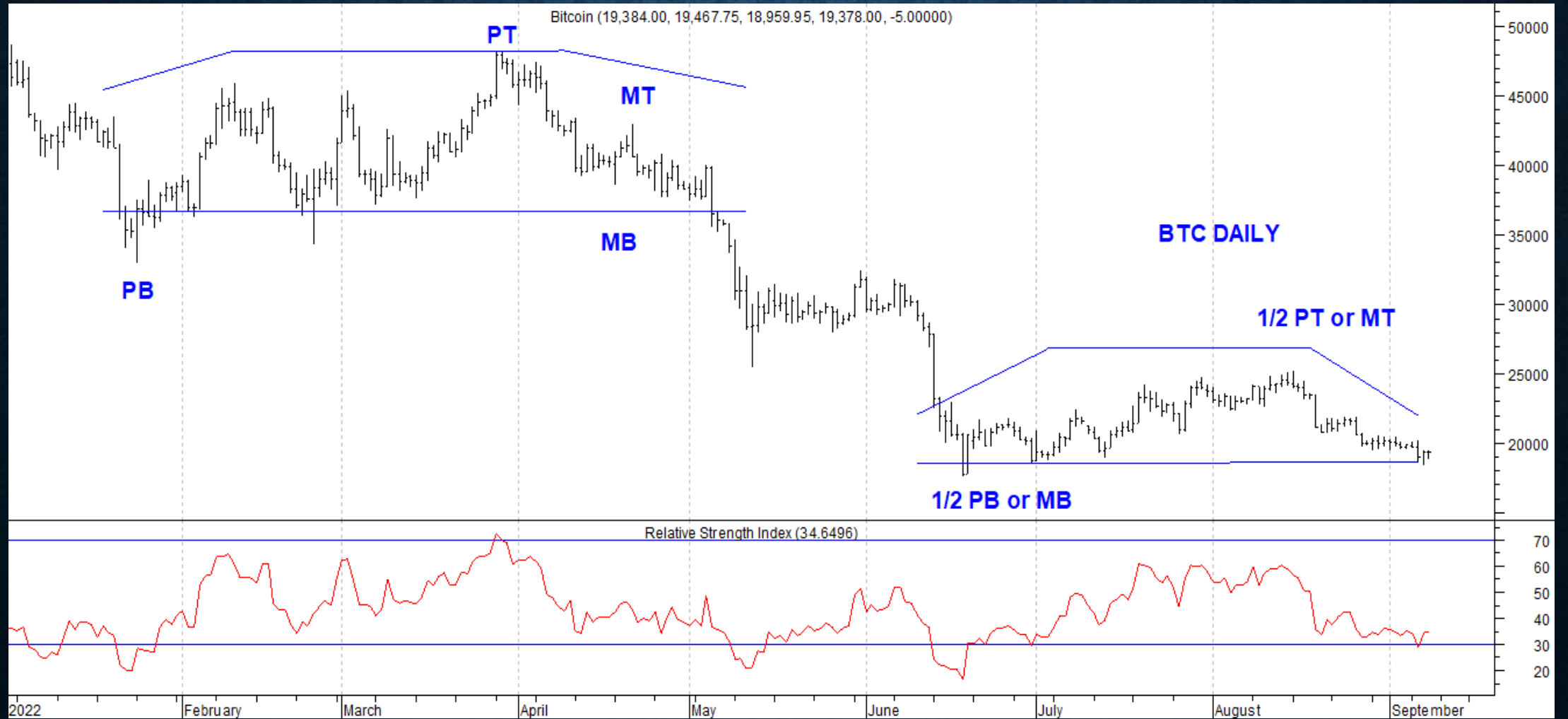
BITCOIN WEEKLY



BITCOIN SHORT-TERM

- 26-40 week primary cycle
 - Last low January 24
 - Starting 33rd week
 - Venus in Libra 9/29-10/23
- 9-14 week major, 13-20 week half-primary cycle
 - 13th week of either

BITCOIN DAILY



BITCOIN SUMMARY & OUTLOOK

- Bottom via 4-year low due ideally in October
- Anytime in Q4 2022/Q1 2023
- Ideally when Venus in Libra
- 10,000-12,000 objective
- Can we avoid a lost decade like Nasdaq, Crude Oil, Boeing, etc?
 - Uranus